

HOSE BURST VALVES



about US

As a innovative enhancer of Fluid Power Transmission Industry that MT MESA is became a global leader with its premium quality products in Global Hydraulics markets.

From the beginning till today, We provide R&D to contribute the sustainable and smart product solutions for components, systems of drive and automation technology in MT MESA.

MT MESA is one of the major suppliers among the Fluid Power Engineering Industry Professional manufacturers to the entire mechanical-engineering industry and many other industries, such as electrical engineering, construction and agricultural machinery, conveyor systems, chemical industry, food and packaging machinery, woodworking, machine tools, shipbuilding, the metal industry, mining and environmental technology.

ADVANCED MANUFACTURING;

Today, companies divide their operations across the world, from the design of the product and manufacturing of components to assembly and marketing, creating international production chains.

Both MESA MAKINA A.S. and MT MESA has operating from the engineering design, casting and machining till to assembling lines and shipment operations in same integrated facility. This business awareness and production ability enables us the strongest position in our business scope by means of our R&D Center guided business operations inhouse. Our global – nationwide shipment operations are carried out under the same roof. By this way our patented products are delivered in time.

MT MESA has also ISO 9001 and IATF 16949, ISO 14001, ISO 18001, ISO 27001 Certificates since 2000. The EFQM Excellence Model is the only company that has a 4 Star Quality Competency Certificate and has received an award.

A GAME CHANGER;

MT MESA - MESA MAKINA A.S. is the indivisible part of International Fluid Power Society as a member of Akışkan Gücü Derneği (AKDER) – Accredited to CETOP (Comité Européen des Transmissions Oléohydrauliques et Pneumatiques ,European Fluid Power Committee).

As a part of MESA MAKINA A.S. , MT MESA has international business interactions and professional collaborations with leading USA & EU business partners in Hydraulic Industry.

MT MESA offers you a wide range of filtration solutions to meet with your hydraulic system requirements perfectly. We ultimately care about all customer feedback to provide smart & quick solutions for the hydraulic sector professionals, students and individuals.



technical INFORMATION

Please read these instructions carefully before installation. All operations must be carried out by specialized and competent personnel.

The user must periodically check the condition and correct functioning of the valves, the corrosion and the condition of the hydraulic installation.

Always respect the technical prescriptions of the valve.

OIL

Use only mineral oil (HL, HLP) according to DIN 51524. The use of other fluids may cause bad working of the valve.

OPERATING TEMPERATURES

Environment temperature: -25°C to +60°C

Oil temperature (with NBR seals): from -25°C to +75°C

VISCOSITY

The viscosity of the oil should be in the range of 15 mm²/s to 250mm²/s.

Recommended viscosity ISO VG 46 (for cartridge valves ISO VG 32).

CONTAMINATION AND FILTRATION

Excessive fluid contamination is the main cause of bad-working in hydraulic installations.

Max. contamination with filter ISO 4406:1999 - class 19/17/14

The use of filters is necessary to protect the system from bad-working, in order to avoid serious consequences for the hydraulic installation and people.

we recommend a filtration of 15 microns for its valves

POWER SUPPLY

The solenoid valve coils must be supplied with voltages between +/- 10% of the nominal voltage at a maximum environment temperature of 60°C.

SEALING

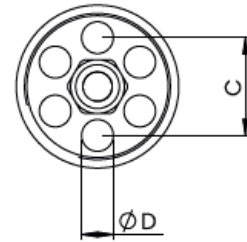
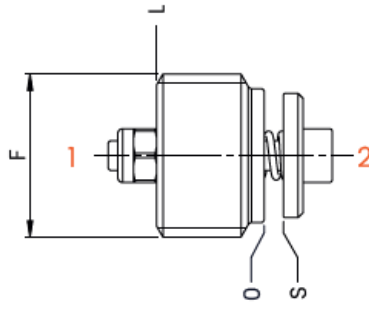
O-rings mounted on the valves are in NBR

The anti-extrusion rings used to protect the O-rings are made of PTFE or NBR.

TESTING CONDITIONS

All the tests shown in the catalogue were carried out with mineral oil ISO VG 46 at a temperature of 40°C and an absolute filtration degree of 15 microns.

MTHPV* HOSE BURST **BSPP**

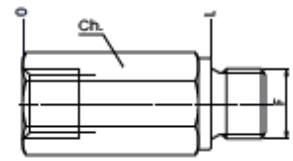


TECHNICAL CHARACTERI

mm [Inches]

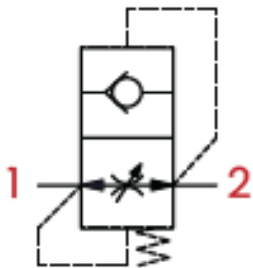
F	C	D	L
1/4 BSPP	8 [0,31]	2,5 [0,10]	8,2 [0,32]
3/8 BSPP	10 [0,39]	3,25 [0,13]	11 [0,43]
1/2 BSPP	11,5 [0,45]	4 [0,16]	13 [0,51]
3/4 BSPP	14,5 [0,57]	5,2 [0,20]	18 [0,70]

HOUSING

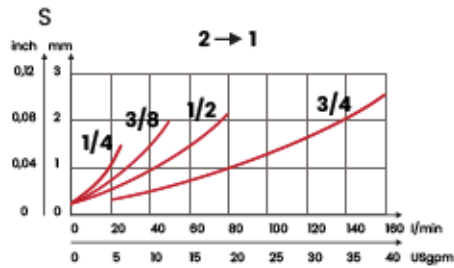


ORDERING CODE	F	L	Ch.
MTVG18	1/4 BSPP	39 [1,53]	19 [0,75]
MTVG19	3/8 BSPP	45 [1,77]	22 [0,87]

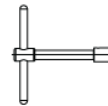
HYDRAULIC CIRCUIT



PERFORMANCES



TOOL



ORDERING CODE	TYPE	WEIGHT kg [lbt]
MTT01	MTHPV1	0,12 [0,27]
MTT02	MTHPV2	0,13 [0,29]
MTT03	MTHPV3	0,15 [0,33]
MTT04	MTHPV4	0,20 [0,44]

ORDERING CODE	F	MAX FLOW l/min [USgpm]	MAX PRESSURE bar [PSI]	VALVE TIGHTENING TORQUE Nm [lbt ft]	NUT TIGHTENING TORQUE FOR ADJUSTMENT Nm [lbt ft]	WEIGHT kg [lbt]
MTHPV1	1/4 BSPP	25 [6,6]	350 [5075]	4 [3]	1 [0,7]	0,008 [0,017]
MTHPV2	3/8 BSPP	50 [13,2]		6 [4,5]		0,014 [0,030]
MTHPV3	1/2 BSPP	80 [21,1]		10 [7,5]	2 [1,5]	0,025 [0,055]
MTHPV4	3/4 BSPP	150 [39,6]		15 [11]		0,05 [0,11]

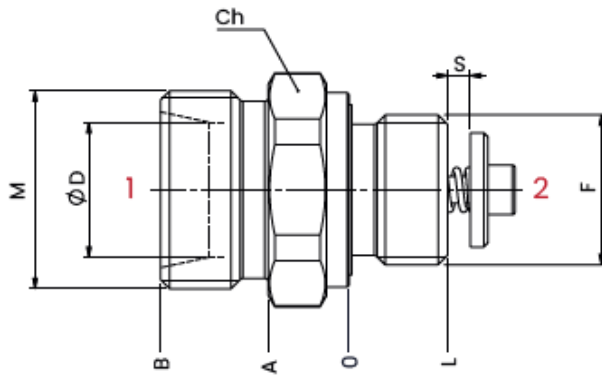
Adjustment and hole on the plate on request

Mineral oil: DIN 51524 ISO 6743/4 | Oil viscosity: 15 to 250 cSt 15-250 mm²/s | Oil temperature: -4°F + 176°F -20°C +80°C | Ambient temperature: -4°F + 122°F -20°C +50°C | Max contamination index with filter: 5 to 250 cSt 15-250 mm²/s | It is necessary a filter use to protect the valve (advised filtration 15µm) | Max leakage in the version without hole: 0,25 cm³/min - 5 drops/min

REGENERATION OF HYDRAULIC

www.mtmesa.eu

VBA*BT DIN HOSE BURST VALVES **BSPP**

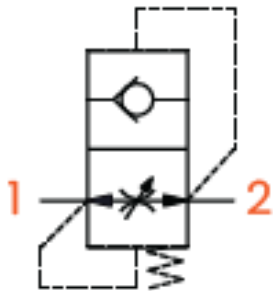


TECHNICAL CHARACTERISTICS

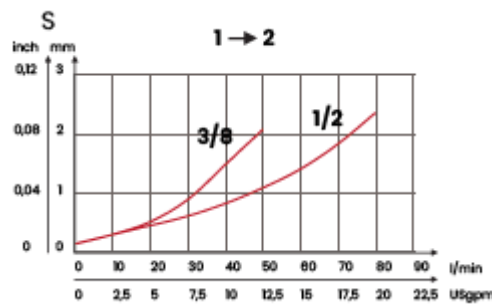
mm [Inches]

F	M	D	L	Ch	A	B
3/8 BSPP	M16 x 1,5	10 [0,39]	11 [0,43]	22	9 [0,35]	20 [0,78]
	M18 x 1,5	12 [0,47]				
	M22x 1,5	15 [0,59]		13 [0,51]		27
1/2 BSPP						

HYDRAULIC CIRCUIT



PERFORMANCES



ORDERING CODE	F	MAX FLOW l/min [USgpm]	MAX PRESSURE bar [PSI]	TORQUE OF TIGHTENING Nm [lbt ft]	TORQUE OF TIGHTENING TUBE Nm [lbt ft]	TORQUE OF ADJUSTMENT SCREW TIGHTENING Nm [lbt ft]	WEIGHT kg [lbt]
MTHPV2D10	3/8 BSPP	50 [13.2]	320 [4641]	30 [22]	20 [15]	1 [0,7]	0,044 [0,097]
MTHPV2D12					40 [30]		
MTHPV2D15					70 [50]		
MTHPV3D15	1/2 BSPP	80 [21.1]		50 [37]		2 [1,5]	0,077 [0,17]

Adjustment and hole on the plate on request

Mineral oil: DIN 51524 ISO 6743/4 | Oil viscosity: 15 to 250 cSt 15-250 mm²/s | Oil temperature: -4°F + 176°F -20°C +80°C | Ambient temperature: -4°F + 122°F -20°C +50°C | Max contamination index with filter: 5 to 250 cSt 15-250 mm²/s | It is necessary a filter use to protect the valve (advised filtration 15 µm) | Max leakage in the version without hole: 0,25 cm³/min - 5 drops/min